

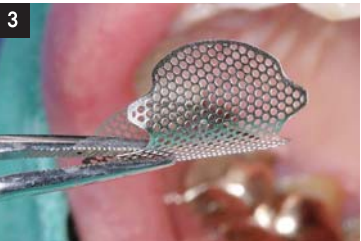
Clinical Case · · · · ·



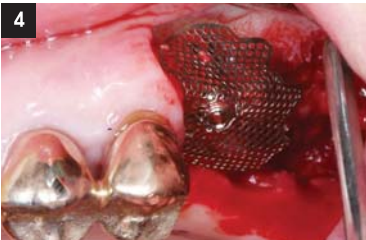
1
Insert Tent Screw on Bone Defect area to procure space for bone formation



2
Apply bone material to the height of Tent Screw



3
Choose CTi-membrane(E3) and proceed Bending to it's appropriate form



4
Create hole on CTi-membrane and connect to Tent Screw



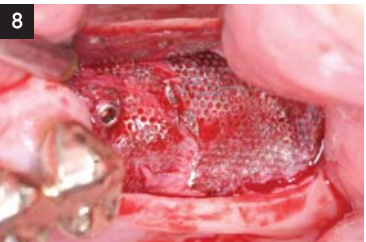
5
Case with CTi-mem fixed on with Cover Screw (old ver.)
Due to large size of defect area 2 CTi-mem has been used



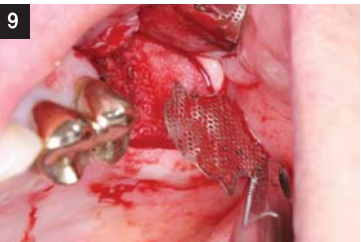
6
Complete Suture



7
Healed soft tissue
IRoutinely check once every month with or without any exposure of the materials



8
Uncovered after 6month time



10



11



12



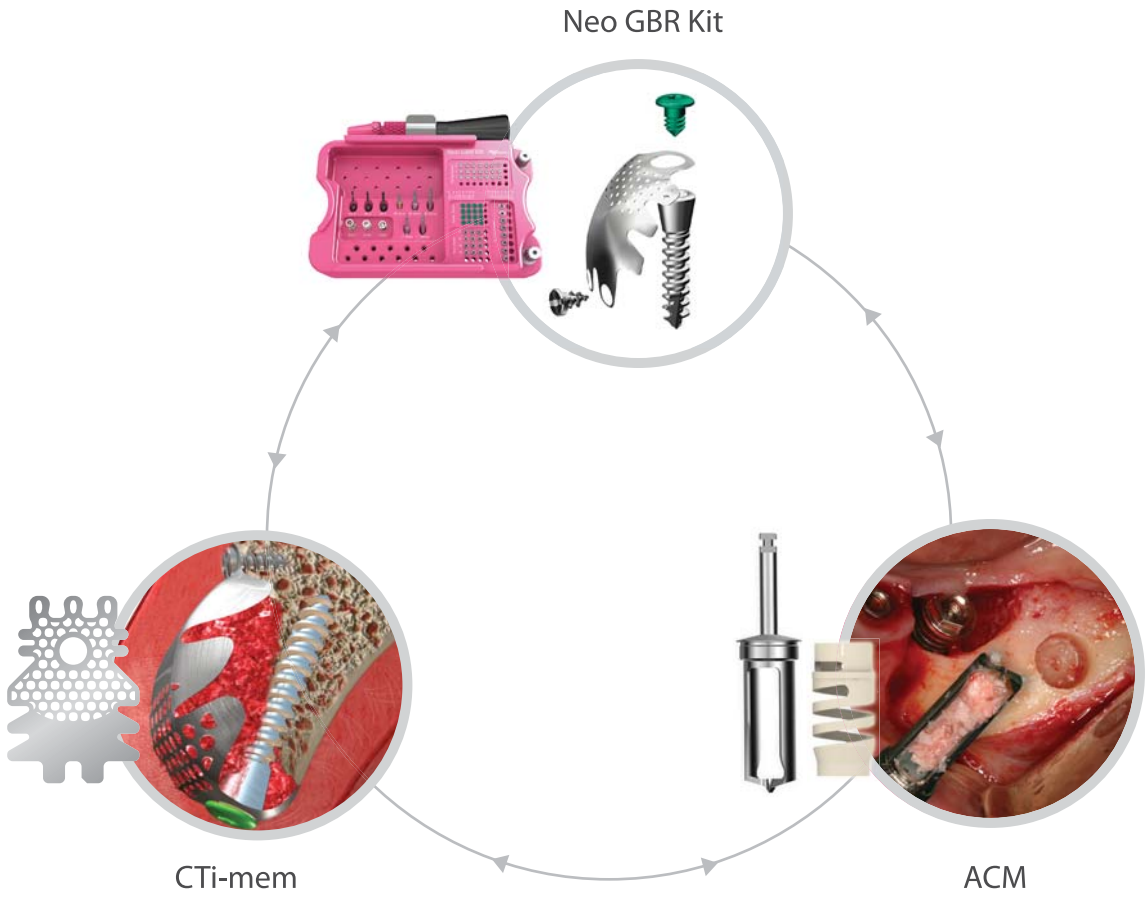
13



14
Buccal side



15
Completed panorama



Neo GBR Total Solution

By linking CTi-membrane and ACM, Neo GBR kit provides total solution through complete innovative GBR procedures.

For Successful GBR Procedure

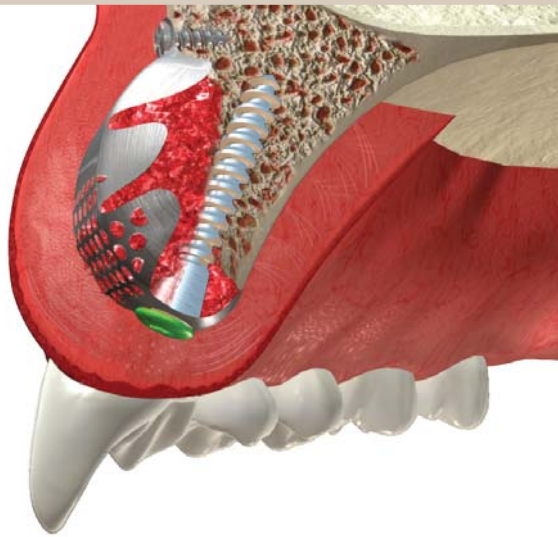
Neo GBR kit USER GUIDE

>>Tent Screw, Cover Screw, Fixing Screw, Spacer



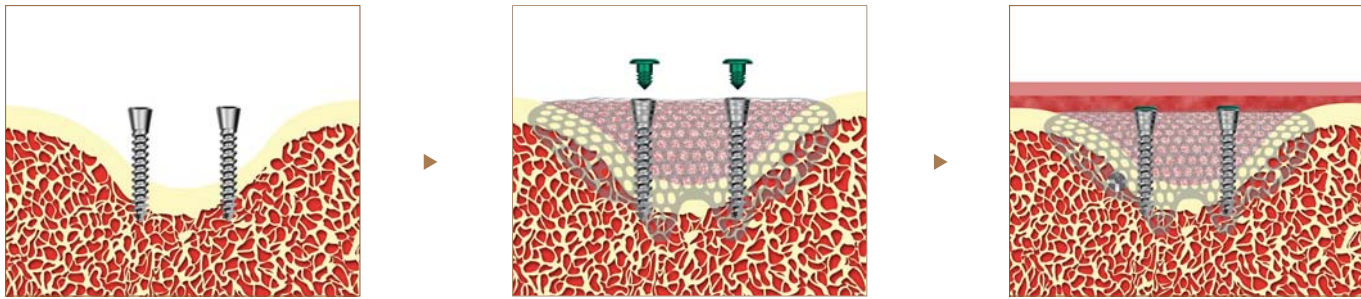
What to do with Neo GBR kit

- With Tent Screw, primary vertical and horizontal formation is possible without placing the implant
- By utilizing the Cover Screw, fixation of membrane to the Tent Screw is done with ease
- Secondary stabilization of the membrane is completed with Fixing Screw
- With Tent Screw space for bone formation on the vast defect area can be maintained
- Bone formation utilizing Spacer, Membrane and Cover Screw after placing Implant



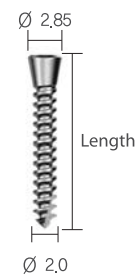
Vertical Augmentation with Neo GBR kit

By utilizing Neo GBR kit, Tent Screw, Cover Screw and Fixing Screw, vertical and horizontal bone level can be augmented.



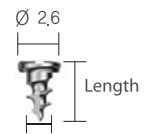
Key Components

Tent Screw bone level augmentation for vertical, horizontal and wide area maintaining space for bone formation to ease the fixing of membrane



Length(mm)	Product Name
7	CTS2007
10	CTS2010
13	CTS2013
15	CTS2015

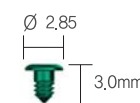
Fixing Screw screw to secondarily stabilize the membrane



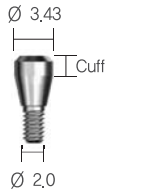
[4ea / 1set]

Length(mm)	Product Name
3	MFS1603
5	MFS1605
7	MFS1607

Cover Screw to stabilize and submerge Tent Screw, Spacer and Membrane



IS Spacer to fixate Membrane using Cover Screw after connecting Spacer to Fixture directly

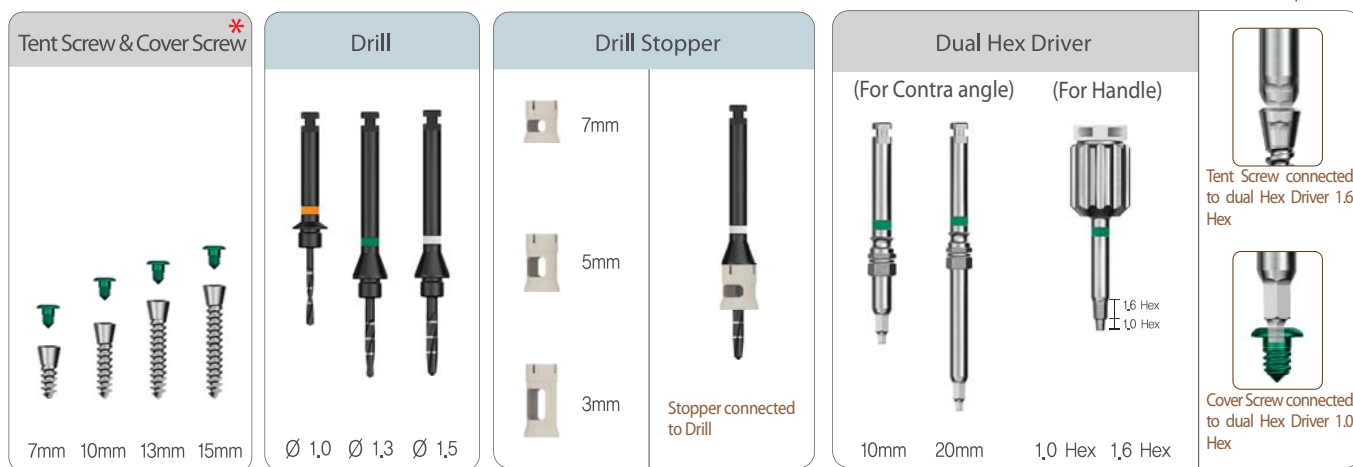


Cuff(mm)	Product Name
0.5	ISCSP3505
1.0	ISCSP3510
1.5	ISCSP3515
2.0	ISCSP3520

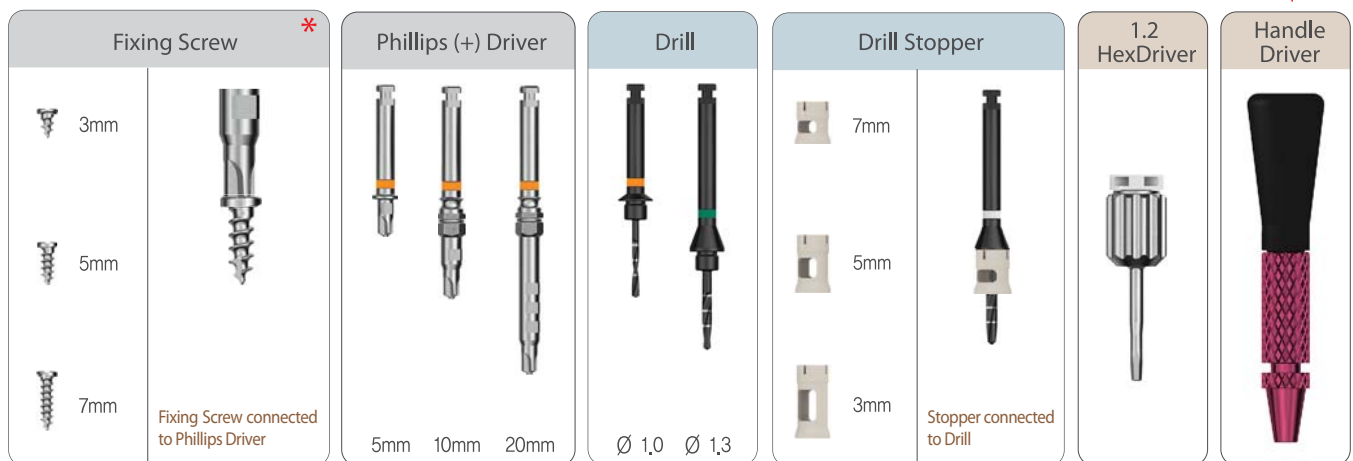
Instruments in Neo GBR kit



[Tent Screw Part]



[Fixing Screw Part]

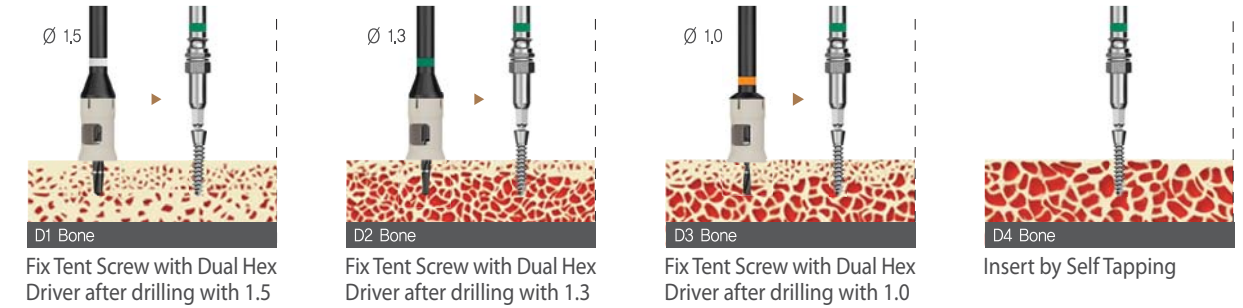


Drilling Guide for Tent Screw & Fixing Screw

[While fastening Tent Screw]

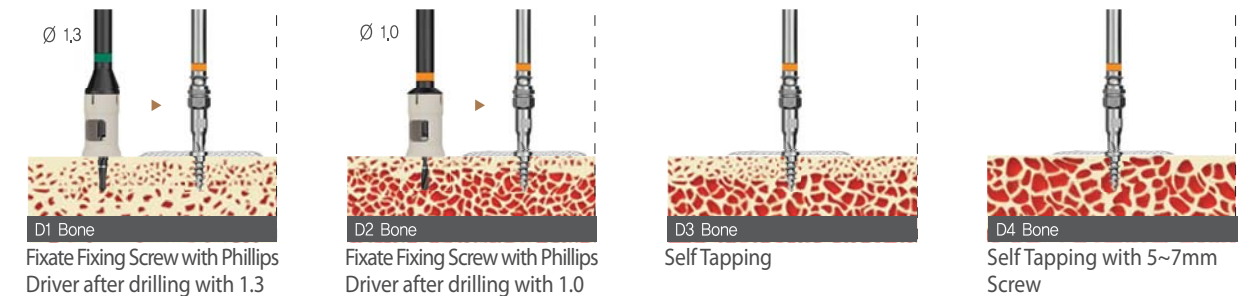
Neo GBR kit's Tent Screw is a Temporary Screw that works as a prop to procure space to enable vertical and horizontal bone formation on large defected area

1. Insert 3mm or more into the bone and needs primary stability of 15~25Ncm
2. Tent Screw could break when 30Ncm is exceeded
3. Insert to the level of bone grafting



[While fastening Fixing Screw]

Neo GBR kit's Fixing Screw secondarily stations Membrane and maintains the desirable volume of bone formation



Surgical Procedure for Vertical Augmentation

